

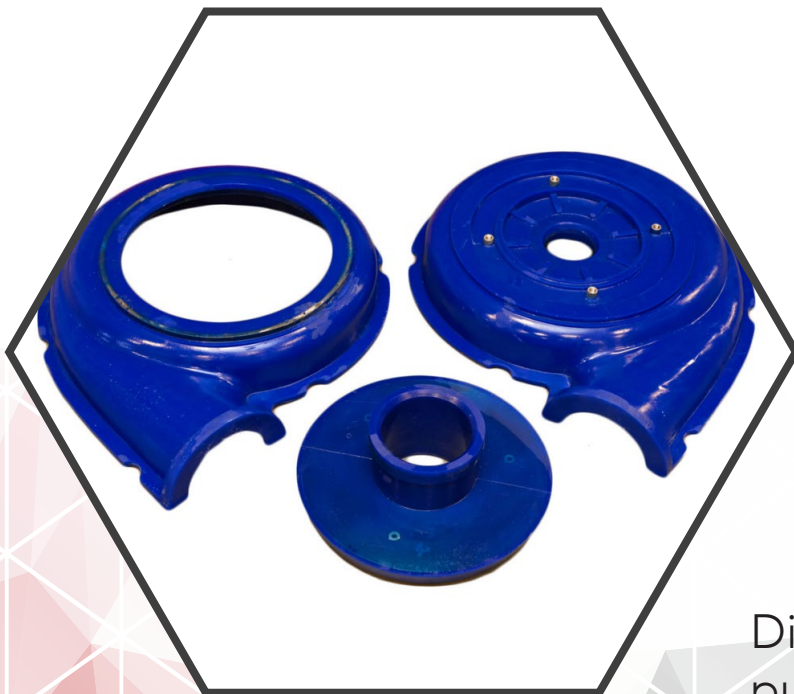
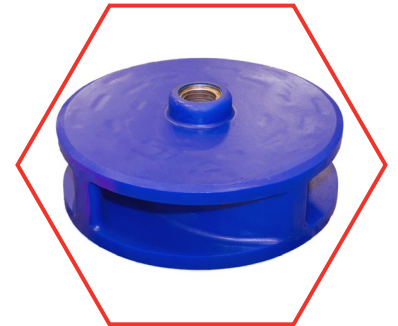
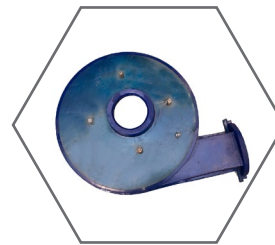
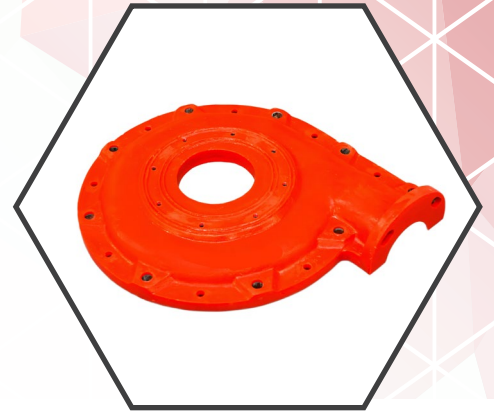


# IRACORE

ADVANCING WEAR TECHNOLOGY

## PUMP LINERS

Iracore pump liners made with our proprietary compounds, significantly outlast competitive urethanes in field testing. With over 30 years of pump lining manufacturing expertise, Iracore has consistently proven the high quality of our products.



## FEATURES

Lightweight

Easy to install

Custom engineering

Predictable maintenance

Specific wear condition urethanes

Dimensionally accurate to ensure pump efficiency

*"Iracore pump liners are the best we have ever used at our mill"*  
- Hard rock mining customer



1-218-262-5211



[insidesales@iracore.com](mailto:insidesales@iracore.com)



[www.iracore.com](http://www.iracore.com)

BRAND	size	BRAND	size	BRAND	size
Ash	4 x 3	Deco	6 x 6	Galigher VH	.75
Ash	6 x 6	Deco	8 x 6	Galigher VH	1.5 x 2
Ash	14 x 12	Deco	10 x 8	Galigher VH	2 x 2.5
Ash	16 x 14	Deco	12 x 10	Galigher VH	4 x 6
Ash	16 x 16	Deco	14 x 12	Galigher VH	6 x 8
Ash	18 x 16	Deco	16 x 14	Galigher VH	8 x 10
Ash SRH	2.5 x 2	Deco	18 x 16	Warman (A)	6 x 4
Ash SRH	5 x 4	Deco	20 x 18	Warman (A)	8 x 6
Ash SRH	8 x 8	Galigher V	1.5	Warman (A)	10 x 8
Ash SRH	10 x 10	Galigher V	2.5	Warman (A)	12 x 10
Deco	2 x 2	Galigher V	3.5	Warman (L)	200
Deco	2.5 x 2 x 3	Galigher V	4	Warman (L)	350
Deco	4 x 3	Galigher V	6	Warman (L)	450
Deco	5 x 4	Galigher V	8		
Deco	5 x 5				

*V = Vertical*  
*VH = Vacseal Horizontal*  
*A = Series A*  
*L = Series L*

## RETURN ON INVESTMENT

Installed in slurry pumps, Iracore pump parts have shown 2 to 3 times the wear life of other urethane and rubber parts saving thousands of dollars in maintenance and downtime.

